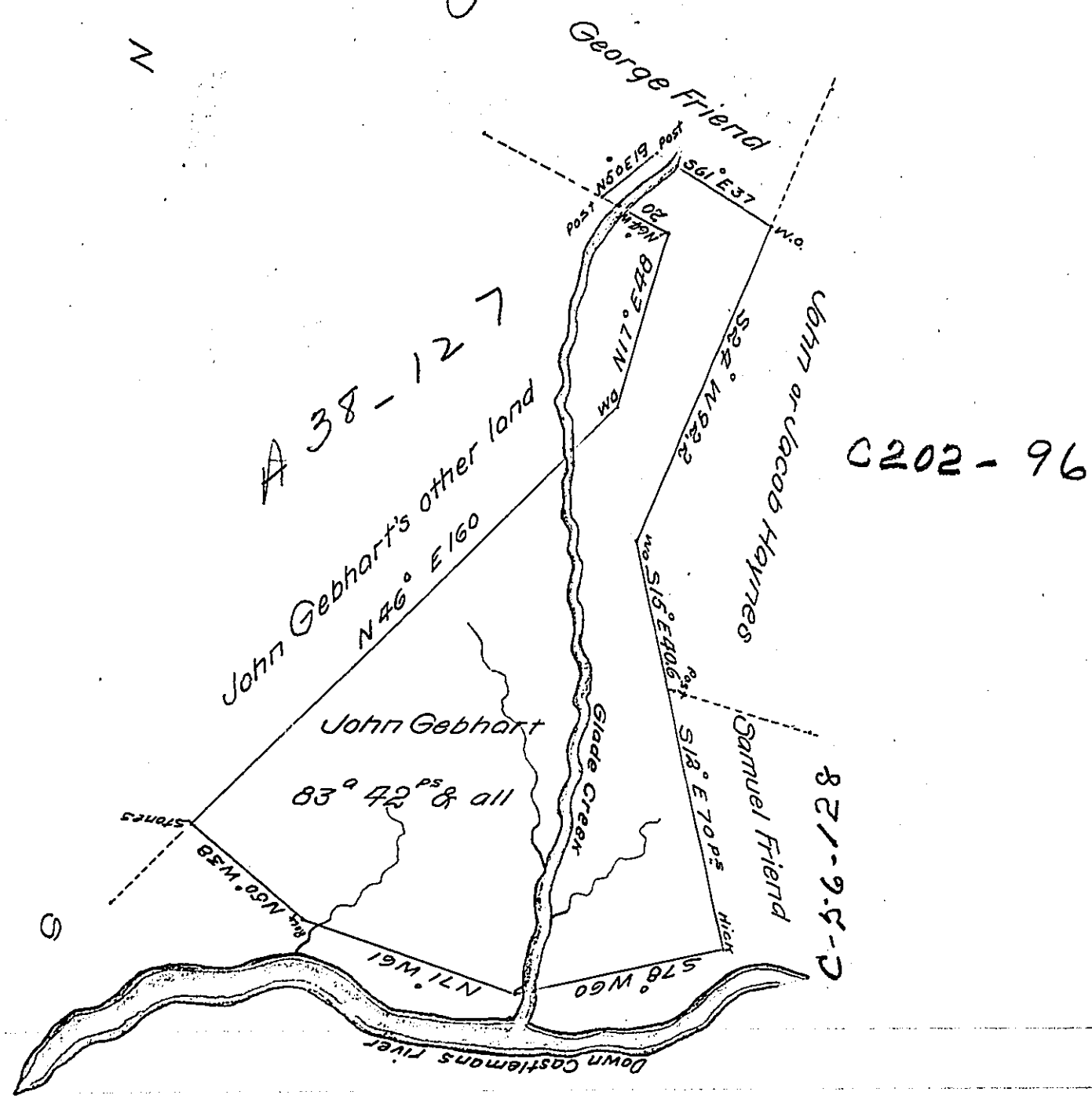


C 202-96



Situate on Casselman's river, at the Mouth of Glade Creek
 in Milford Township, Somerset County & Surveyed the 5th day of May
 1825, in pursuance of a Warrant granted to the said John Gebhart
 dated the 5th day of April 1825 Certified this 5th day of May 1825.
 To Gabriel Hiester J^r Esq. Surv^r. Gen^l. Pa } P^r Bernard Connelly J^r.
 D.S. Som^r. Co.

Note. This Survey was first improved about 40 or 41 years ago
 from the best information I can obtain. B.C.J^r

IN TESTIMONY that the above is a copy of the original remaining on file in
 the Department of Internal Affairs of Pennsylvania, made
 conformably to an Act of Assembly approved the 16th day of
 February, 1833, I have hereunto set my Hand and caused
 the Seal of said Department to be affixed at Harrisburg,
 this fifth day of December 1904

Joseph R. Pearson
 Secretary of Internal Affairs.